

Laxmi Steel Industries

Formerly



Subhash & Company

PRODUCT CATALOUGE



www.subhashandcompany.com

FRONT

About Us



Laxmi Steel Industries (formerly Subhash & Company) is a trusted name in metal furniture manufacturing with more than four decades of experience. Based in Jalgaon, Maharashtra, we operate a modern 35,000 sq. ft. production facility equipped with advanced machinery for laser cutting, turret punching, CNC bending, powder coating, UV printing and precision welding.

Our brand “Fabnest” reflects our commitment to durable, stylish and value-for-money metal furniture solutions for homes, offices and institutions. We manufacture a wide range of steel almirahs, store wells, metal beds, office storage units and customised furniture designed for long-term performance.

Based out of Jalgaon, Maharashtra with modern manufacturing set up having 35,000 sq. ft. floor area, the company offers both manufacturing & job shop services to its customers for Laser Cutting, Turret Punching, CNC Bending, Powder Coating, UV Printing, Laser Marking & Welding (Spot/MIG/TIG/Laser).

MISSION

To manufacture innovative and high-quality metal products that offer durability, functionality and affordability for every customer.

VISION

To become India's most trusted and affordable metal furniture brand, known for premium design, long-lasting materials and customer-focused service.

OUR VALUES

- Maximum durability
- Modern premium finishes
- Easy transport and knock-down construction
- Simple assembly, dismantling and modifications
- Consistent quality and value for money



Why Choose Us?

- 40+ years of metal fabrication expertise
- State-of-the-art machinery and skilled workforce
- Factory-direct pricing
- Custom size and design options
- Strict quality checks at every stage
- Fast delivery timelines
- Strong dealer support and service network

Our Technology & Infrastructure

Our production facility includes:

- High-precision Laser Cutting Machines
- CNC Bending and Turret Punching Machines
- MIG/TIG/Laser Welding Stations
- UV Printing Units
- Modern Powder Coating Plant
- Dedicated Dispatch Zone

These systems ensure accuracy, finishing quality and consistent product performance.



Our Product Range

Steel Almirahs & Wardrobes

All almirahs are manufactured using Cold Rolled Mild Steel Sheets with premium powder coating for long-lasting protection. Available in multiple sizes, colours and finishes.

Key Features :

- Slimline and elegant body shape
- Strength-bend doors for rigidity
- Noise-free hinges
- Full deep partitions
- Branded handles
- UV printed designer panels
- High-quality locking systems
- Optional bangle box and



Outside Feature

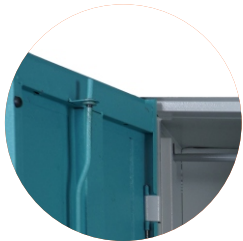


- Material** : CRC Sheet
Designed : Slimline Body With Strength Bend Line Door
Color & Finishing : Brown, Marron & Pink. Structure Finish & Crocodile Finished Powder Coating
Doors : Doors Running On Hinges For Smooth & Noiseless operation
Partations : Full Deep Partations

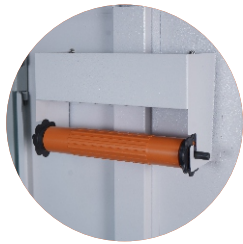
Introducing our newly updated almirah range – now with enhanced strength, premium color finishes, stylish door designs, and a modern aesthetic for every space.

आमची नवीन अपडेटेड कपाट रेंज – अधिक मजबुती, प्रीमियम रंग फिनिशिंग, आकर्षक दरवाजांची रचना आणि आधुनिक लूकसह आता उपलब्ध आहे.

Inside Feature



Noiseless Locking System



Bangle Box



3+2 Locking System



Standard Zipco Locks



Strong & Noiseless Hinges



Full Deep Partition



Laxmi Steel Industries



Rajkot :

A compact, elegant wardrobe designed for urban homes needing maximum storage in minimum space.

Features : Mirror panel, smooth hinges, well-planned shelves.

Price : ₹ 11,300/-

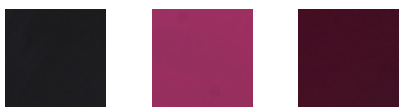
Material : Cold Rolled Mild Steel Sheet

Size : D 17 x W 34 x H 76 inch

Thickness : 0.4 mm

Gross Wt. : 41 Kg ± 2kg

Coating : Structured Finish Powder Coating



for more details
Scan Me



Sangam

A spacious dual-door wardrobe ideal for families.

Features : Deep shelves, organiser box, modern finish

Price : ₹ 15,000/-

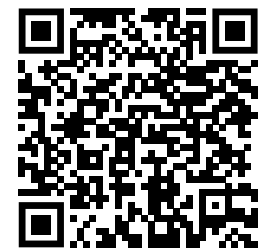
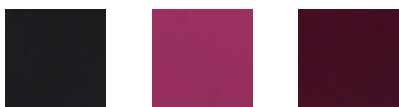
Material : Cold Rolled Mild Steel Sheet

Size : D 19 x W 42 x H 76 inch

Thickness : 0.4 mm

Gross Wt. : 54 Kg ± 2kg

Coating : Structured Finish Powder Coating



for more details
Scan Me

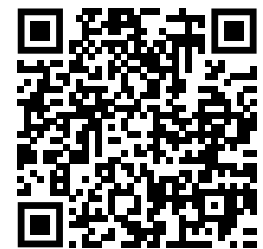


Sadi Box

Designed specially for Sadi Box and valuable clothing storage.

Features : Extra-wide shelves, premium front look

- Price** : ₹ 16,000/-
Material : Cold Rolled Mild Steel Sheet
Size : D 19 x W 42 x H 76 inch
Thickness : 0.4 mm
Gross Wt. : 53 Kg ± 2kg
Coating : Structured Finish Powder Coating



for more details
Scan Me

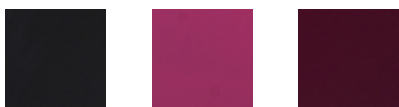


Ganga 3 Doors

Perfect for joint families needing multiple storage zones.

Features : Three separate access doors, strong body

- Price** : ₹ 19,300/-
- Material** : Cold Rolled Mild Steel Sheet
- Size** : D 19 x W 48 x H 76 inch
- Thickness** : 0.4 mm
- Gross Wt.** : 64 Kg ± 3kg
- Coating** : Structured Finish Powder Coating



for more details
Scan Me

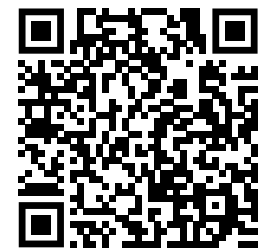


19 x 36 Premium

A stylish premium model with heavy gauge sheet and crocodile texture powder coat.

Features : Premium UV print, reinforced body

- Price** : ₹ 17,500/-
- Material** : Cold Rolled Mild Steel Sheet
- Size** : D 19 x W 36 x H 76 inch
- Thickness** : 0.5~0.6 mm
- Gross Wt.** : 56 Kg ± 3kg
- Coating** : Crocodile Finish Powder Coating



for more details
Scan Me



Bahubali

A robust, large-capacity almirah designed for long-term durability.

Features : Extra-strong doors, modern design panel

Price : ₹ 22,000/-

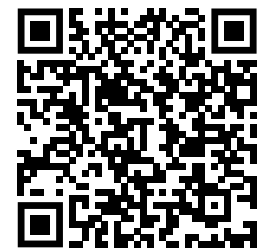
Material : Cold Rolled Mild Steel Sheet

Size : D 19 x W 48 x H 76 inch

Thickness : 0.4 mm

Gross Wt. : 65 Kg \pm 3kg

Coating : Crocodile Finish Powder Coating



for more details
Scan Me



Four Doors

Designed for families requiring maximum space in a single unit.

Features : Multiple compartments + locker section

Price : ₹ 26,800/-

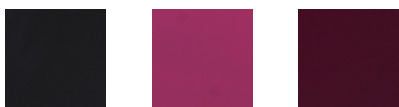
Material : Cold Rolled Mild Steel Sheet

Size : D 19 x W 60 x H 76 inch

Thickness : 0.4~0.5 mm

Gross Wt. : 80 Kg ± 3kg

Coating : Crocodile Finish Powder Coating



for more details
Scan Me



Premium Sangam

A heavy-duty premium wardrobe with rich finish and stylish design.

Features : Luxury look, durable structure

Price : ₹ 24,000/-

Material : Cold Rolled Mild Steel Sheet

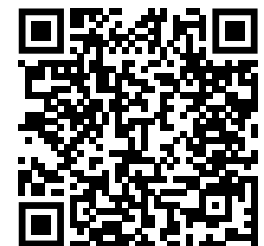
Size : D 20 x W 48 x H 76 inch

Thickness : 0.5~0.6 mm

Gross Wt. : 77 Kg ± 3kg

Coating : Crocodile Finish Powder Coating

Note - 3% Manufacturing Tolerance



for more details
Scan Me



Premium 3 Doors

A three-door premium model for organised and spacious storage.

Features : Premium colour options & heavy gauge material

- Price** : ₹ 27,400/-
- Material** : Cold Rolled Mild Steel Sheet
- Size** : D 19 x W 36 x H 76 inch
- Thickness** : 0.5~0.6 mm
- Gross Wt.** : 86 Kg ± 3kg
- Coating** : Crocodile Finish Powder Coating



for more details
Scan Me



Slim Sangam

Designed for modern homes that need premium aesthetics with high storage.

Features : Wider shelves, luxury look, strong construction

Price : ₹ 28,800/-

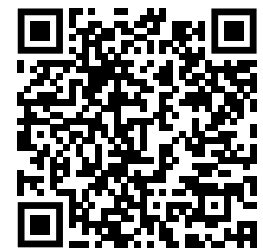
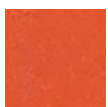
Material : Cold Rolled Mild Steel Sheet

Size : D 20 x W 48 x H 76 inch

Thickness : 0.5~0.6 mm

Gross Wt. : 95 Kg ± 3kg

Coating : Crocodile Finish Powder Coating



for more details
Scan Me



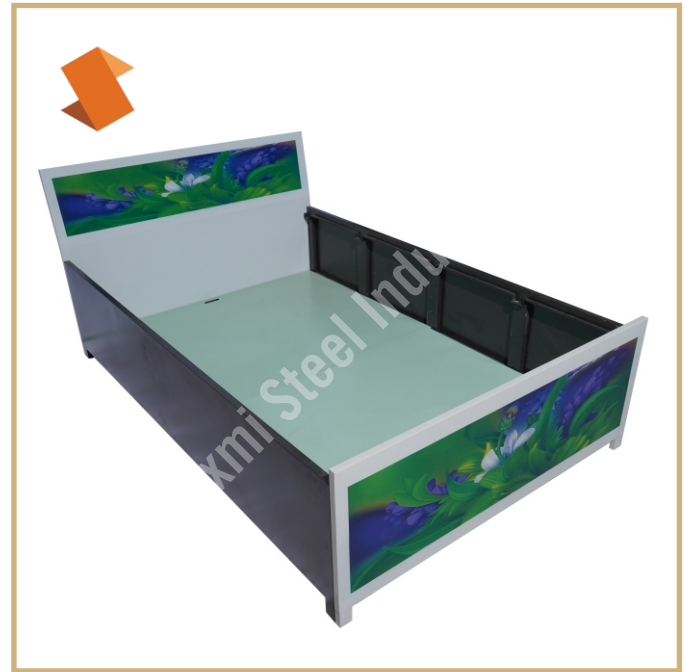
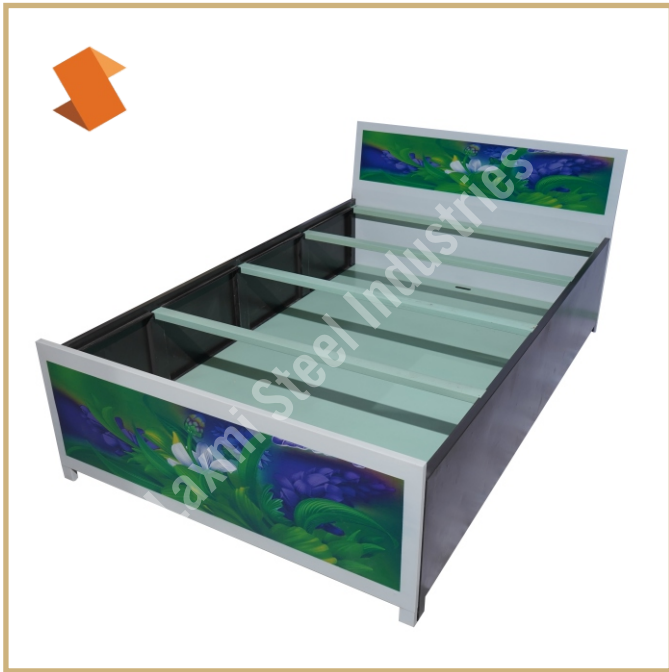
Storewell

A versatile storage solution for homes, shops and offices. Available with or without locker.

6.5 Ft. Storewell With Locker -	Price - 12000	35Kg
6.5 Ft. Storewell Without Locker -	Price - 11000	34kg
4.5 Ft. Storewell With Locker -	Price - 10000	26Kg
4.5 Ft. Storewell Without Locker -	Price - 9000	25Kg
Size	: D 17 x W 34 x H 76 inch	
Size	: D 17 x W 34 x H 54 inch	
Material	: Cold Rolled Mild Steel Sheet	
Thickness	: 0.4 mm	
Coating	: Structured Finished Powder Coating	



for more details
Scan Me



Metal Bed

High-quality metal beds with strong frame, premium finish and elegant design. Available in multiple sizes and designs.

Size	: 4 x 6 Feet	Weight - 65 Kg +2	Price -16000
Size	: 5 x 6 Feet	Weight - 75 Kg +2	Price - 19000

Size : 4 x 6 Feet
 Size : 5 x 6 Feet
 Material : Cold Rolled Mild Steel Sheet
 Thickness: 0.4~0.5 mm
 Coating : Powder Coated With UV Printing



for more details
Scan Me

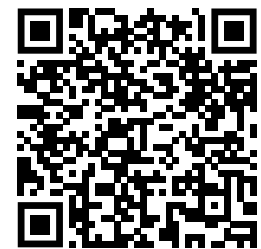


Customised Items

We manufacture customised items as per requirement :

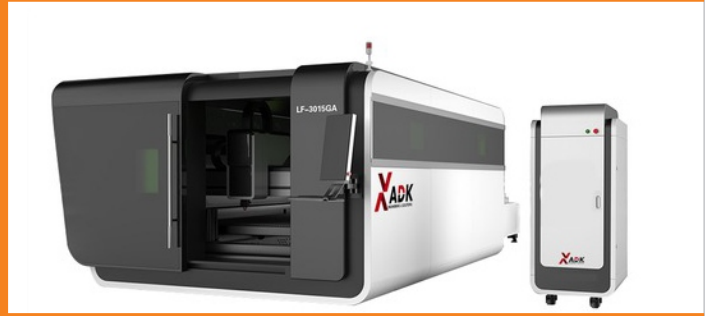
- Book Case
- Pedestel
- Shoe Rack
- Classroom Desk
- Storage Racks

Anything in metal furniture range.
Any size any price range.



for more details
Scan Me

Our Machinery



Our Units



**DISPAATCH
15000 SQ. FT.**



**FABRICATION
15000 SQ. FT.**



**POWDER COATING SECTION
5000 SQ. FT.**



Free delivery



Committed for delivery
best values on
home interior products.



Ensuring lowest
price on every item.



Partnering for growing together
through : one town one counter
policy give you authorised dealer
as our brand.

Factory Address :

📍 Gat no. 116/1,2,3, Paldhi (Bk) ,Khedhi - Kadholi Phatta,
NH 06, Tal- Dharangaon, Dist- Jalgaon, MS.425103

📞 **Yogesh Bari** : 9822457879

Arun Bari : 9225602888

Jishan (Sales) : 8956928370

✉️ bari.yogesh@ymail.com